

VISIT SITE NOW »

Self-Priming Pump 6-inches 173-HP

Universal Configuration: Trailer or Skid

MODEL

6-inches DSP/HD 6000 173-HP Self Priming Pump

OPERATING LEVELS

Min Flow	450 GPM
Max Flow	2000 GPM
Head Range	Up to 200 ft
Discharge Size	6 inches
Suction Size	8 inches
Solids Handling	Solids up to 5 inches
Max Speed	1800 RPM
Percent Solids	Up to 40-70% Solids



*Typical Deployment Photo. Dredge pumps can be deployed vertically or horizontally. Photos for general guidance. Contact us for further details.

PARTS

STANDARD MATERIALS

Rotor	High Chrome (EddyChrome) - other materials available
Volute Casing	High Chrome (EddyChrome) - other materials available
Shaft	Chromoly or Stainless Steel
Mechanical Seal	Dual Tungsten Carbide with Self Contained Seal Flushing System
Bearing Housing	Ductile Iron

ENGINE SPECS

- 173-HP (129 kW) Diesel Engine Tier IV (Tier III International) - 2200 RPM
- Liquid Cooled, 12 Volt Power In-Line 4 Cycle Turbo Charge Diesel
- Electronic Fuel System
- ECU w/ de-rates and shutdowns
- Estimated Fuel Consumption - 10.3 GPH
- Dimensions - 195 inches (Length) x 81 inches (Width) x 98 inches (Height)

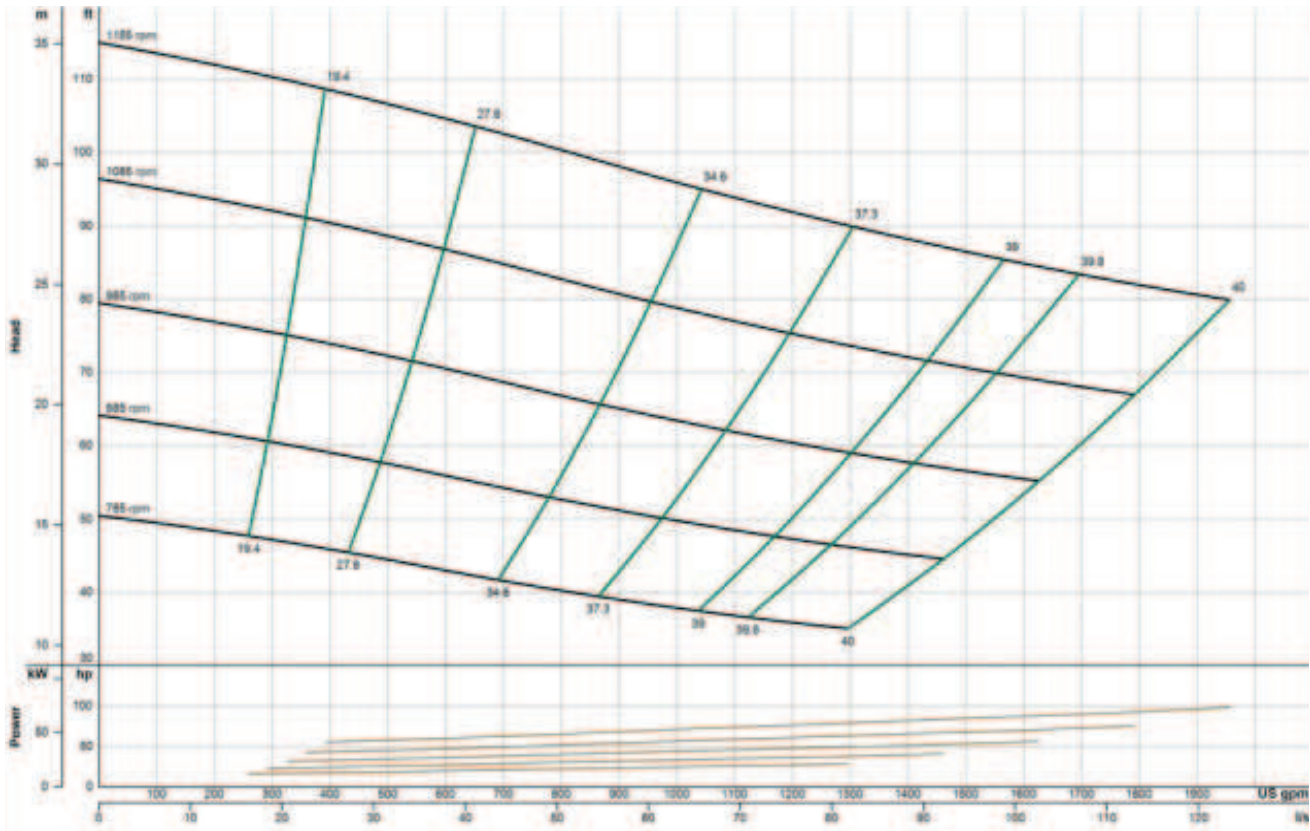
We pump up to 70% solids, not water.

[VISIT SITE NOW >>](#)

PUMP CURVE

A pump curve is a graphical representation of a pumps ability to produce flow against a certain head. The science is matching a curve that is accurate for your project, leading to the proper pump selection and best efficiency. **EDDY Pumps** are primarily used for high solids, slurry, sludge, and dewatering.

EDDY Pump - Self-Priming Pump 6-inches 173-HP - Pump Curvez



*General pump curve based on water at 1200 RPM. Contact us with your specific material for a custom pump curve.

[CONTACT US](#)



(619) 258-7020



info@EddyPump.com