

VISIT SITE NOW »

Electric Excavator Pump Attachment 6-inch (EXFE-6000)

MODEL

EXFE-6000

OPERATING LEVELS

Min Flow	450 GPM
Max Flow	2000 GPM
Head Range	Up to 200 ft
Discharge Size	6 inch
Suction Size	8 inch
Solids Handling	Solids up to 5 inch
Max Speed	1800 RPM
Percent Solids	Up to 40-70% Solids
CU YD Material HR	150-200

RECOMMENDED SENSORS

Wireless Doppler Flow Meter
RTK/GPS System for precision real-time dredging



*Typical Deployment Photo. Dredge pumps can be deployed vertically or horizontally. Photos for general guidance. Contact us for further details.

REQUIRED EQUIPMENT TO OPERATE ATTACHMENT

Cutterhead circuit requirements from excavator auxiliary power or from hydraulic power unit 12-18 GPM at 4250 psi (1340 cc motor)

6-inch DAE Slurry hose

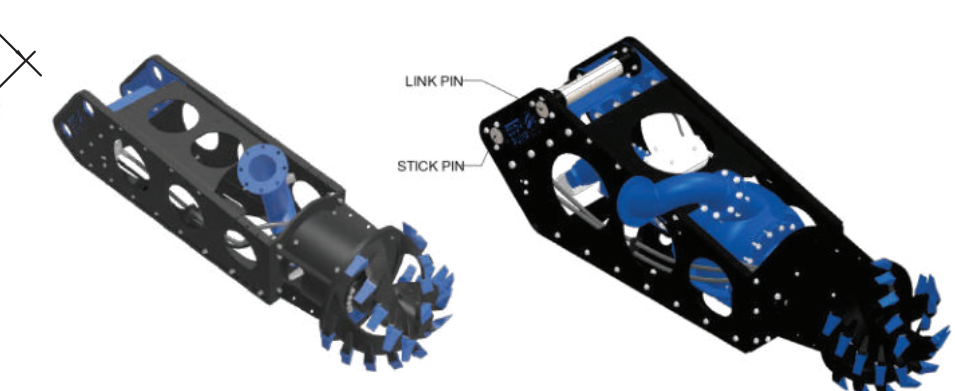
Generator and VFD to power a 150-HP motor

MAXIMUM LINKAGE CROSS SECTION

[114mm]
4.5in

STANDARD SIZING	
PART #	SIZE
01425	Ø 80 MM
12877	Ø 90 MM
06661	Ø 100 MM
01042	Ø 110 MM

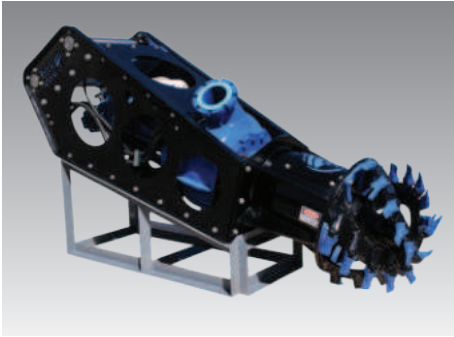
*CUSTOM SIZES AVAILABLE UPON REQUEST



(EXFE-6000 Frame, Elbow Discharge, Cutterhead ONLY No Pump)

We pump up to 70% solids, not water.

VISIT SITE NOW »



EDDY Pump Electric Excavator Pump Attachment 6-inch (EXFE-6000) are non-clog pumps designed for high solids industrial pumping applications. Our patented pump technology outperforms all centrifugal, vortex and positive displacement pumps in a variety of the most difficult pumping applications.

Available in alternative power options and pump sizes depending on your application.

Applications

- Mining
- Chemical
- Sand & Agg
- Oil and Gas
- Paper & Pulp
- Fly Ash & Coal Ash

Features and Benefits

- Non-Clog, High Viscosity, High Specific Gravity, High Abrasives, Low pH Pumping Design
- Transport 40-70% Solids
- Ability to pump objects of up to 6-inch in diameter

Fluid Pumped

- Sludge
- Slurry
- Drilling Mud
- Mine Tailings
- Grit
- Sand Mixtures

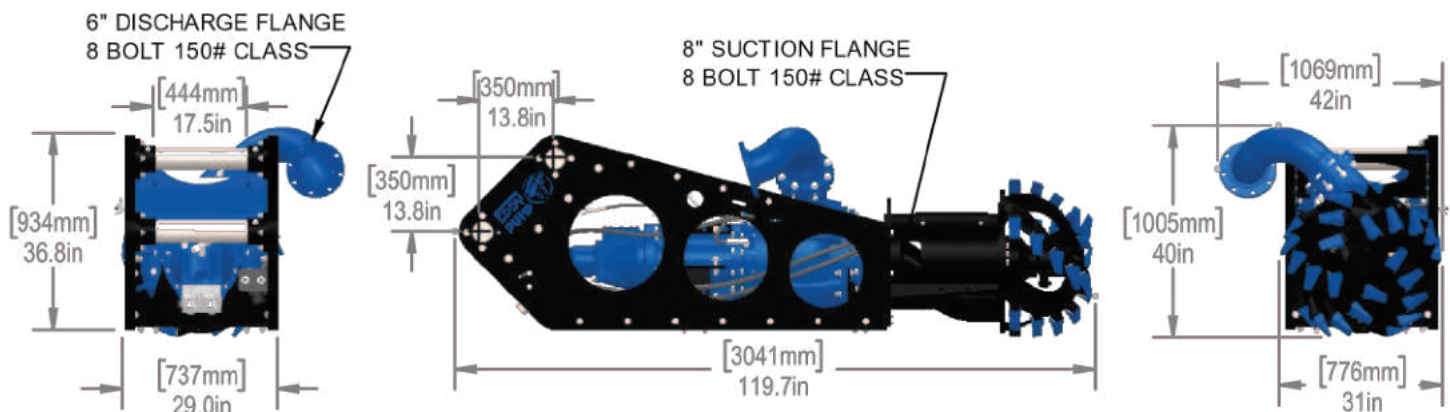
OPTIONAL EQUIPMENT TO ENHANCE OPERATION OF DREDGE

Wireless Doppler Flow Meter

RTK/GPS System for precision real-time dredging

GENERAL SPECS

Overall Weight (without optional equipment)	4,800 lbs	2,177 kg
EXFE-6000 Frame, Discharge Elbow and Cutterhead	1800 lbs	816 kg



We pump up to 70% solids, not water.

VISIT SITE NOW »

OPTIONAL EQUIPMENT TO ENHANCE OPERATION OF DREDGE

Magnetic flow meter

Discharge line pressure gauge (0-150 psi)

"Quick Prime" Valve (requires small 24 volt air system)

Pivot mounted Discharge hose carrier (adaptable to most machines)

Recirculation system for pre-mixing applications (requires small 24 volt air system)



STANDARD
CUTTER HEAD



SELF-CLEANING
HEAD



WATER
JETTING RING



LINER-SAFE
WHEELS



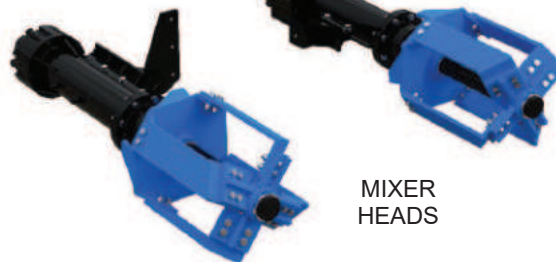
RE-CIRCULATION



EXTENDED
CUTTER HEAD



AUGER
HEAD



MIXER
HEADS

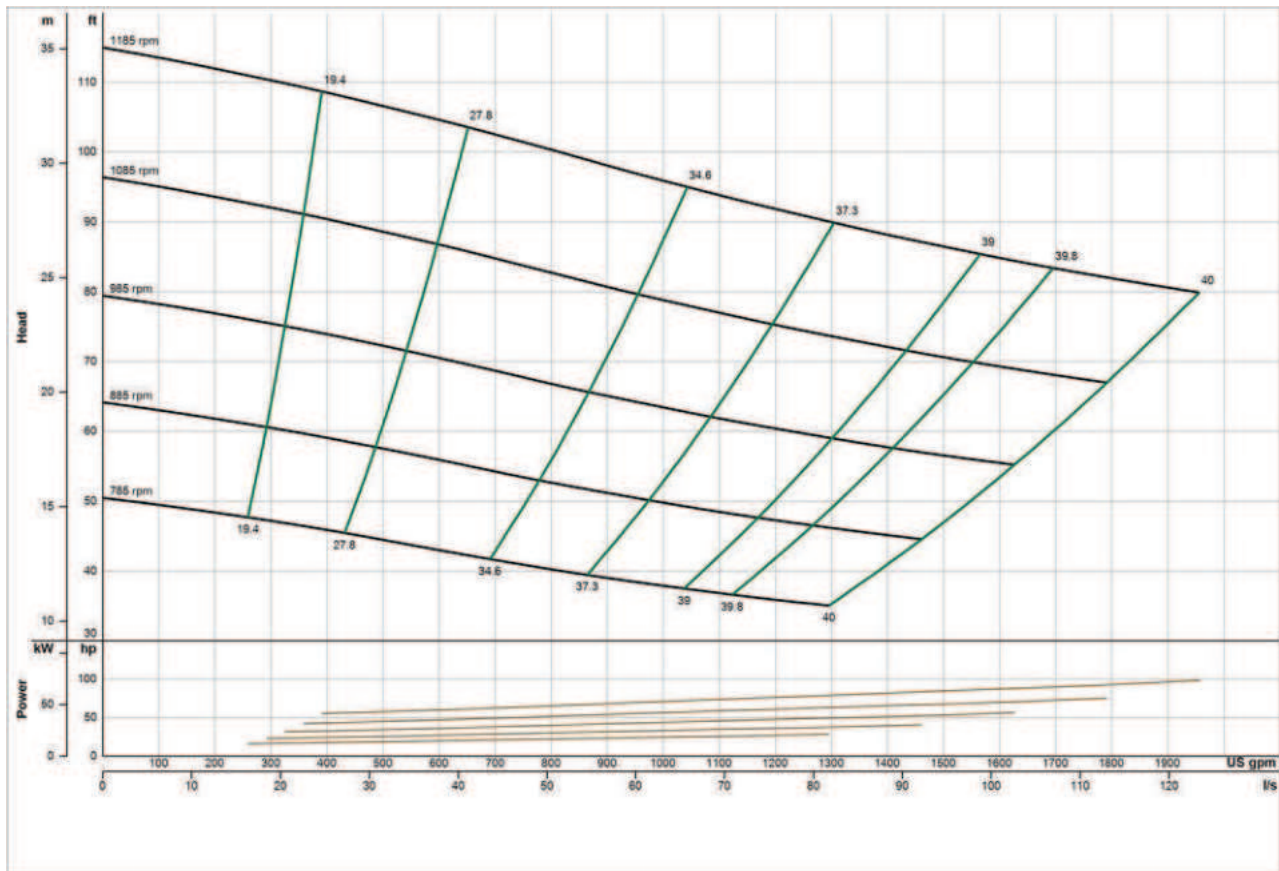
We pump up to 70% solids, not water.

VISIT SITE NOW »

PUMP CURVE

A pump curve is a graphical representation of a pumps ability to produce flow against a certain head. The science is matching a curve that is accurate for your project, leading to the proper pump selection and best efficiency. **EDDY Pumps** are primarily used for high solids, slurry, sludge, and dewatering.

EDDY Pump - Electric Excavator Pump Attachment 6-inch (EXFE-6000) - Pump Curve



*General pump curve based on water with 1200 RPM motor. Contact us with your specific material for a custom pump curve.

CONTACT US



(619) 258-7020



info@EddyPump.com