

VISIT SITE NOW »

Electric Cable Deployed Pump with Water Jetting Agitator 12-inches

MODEL

12-inches JPE 12000 Cable Deployed Pump with Jetting Ring

OPERATING LEVELS

Min Flow	1800 GPM
Max Flow	7000 GPM
Head Range	Up to 200 ft
Discharge Size	12 inches
Suction Size	14 inches
Solids Handling	Solids up to 11 inches
Max Speed	1800 RPM
Percent Solids	Up to 40-70% Solids
CU YD Material HR	500-600
Dredging Depth	Up to 100 ft

RECOMMENDED SENSORS

Wireless Doppler Flow Meter
RTK/GPS System for precision real-time dredging

REQUIRED EQUIPMENT TO OPERATE ATTACHMENT

12-inches DAE Slurry hose
Generator and VFD to power a 700 Hp motor

OPTIONAL EQUIPMENT TO ENHANCE OPERATION OF DREDGE

Doppler Wireless Slurry Flow Meter
Discharge line pressure gauge (0-150 psi)
"Quick Prime" Valve (requires small 24-volt air system)
Pivot mounted discharge hose carrier (adaptable to most machines)
Cable Hung Unit can convert to be compatible with Liner Safe Roller Attachment and Self Cleaning Mud Guard
Recirculation system for pre-mixing applications (requires small 24-volt air system)



*Typical Deployment Photo. Dredge pumps can be deployed vertically or horizontally. Photos for general guidance. Contact us for further details.

We pump up to 70% solids, not water.

VISIT SITE NOW »



Electric Cable Deployed Pump with Water Jetting Agitator 12-inches is a non-clog pump designed for high solids industrial pumping applications. Our patented pump technology outperforms all centrifugal, vortex and positive displacement pumps in a variety of the most difficult pumping applications. Increase or decrease water flow and adjust jetting pattern to suit your project demands. Available in alternative power options and pump sizes depending on your application.

Available in alternative power options and pump sizes depending on your application.

Applications

- Barge Unloading
- Deep Water Dredging
- Mining
- Sand & Agg
- Oil & Gas
- Fly ash & Coal Ash

Features and Benefits

- Non-Clog, High Viscosity, High Specific Gravity, High Abrasives, Low pH Pumping Design
- Transport 40-70% Solids
- Ability to pump objects of up to 12-inches in diameter

Fluid Pumped

- Sludge
- Slurry
- Drilling Mud
- Mine Tailings
- Grit
- Sand Mixtures

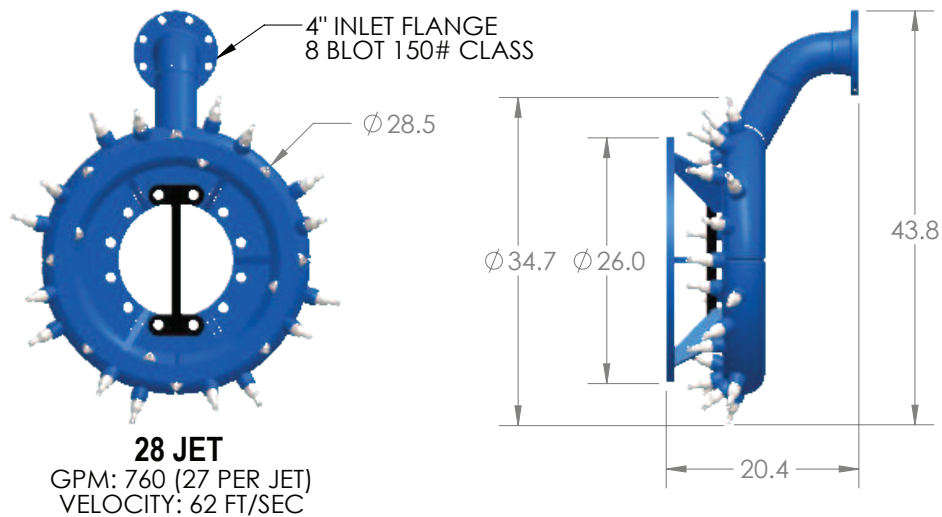
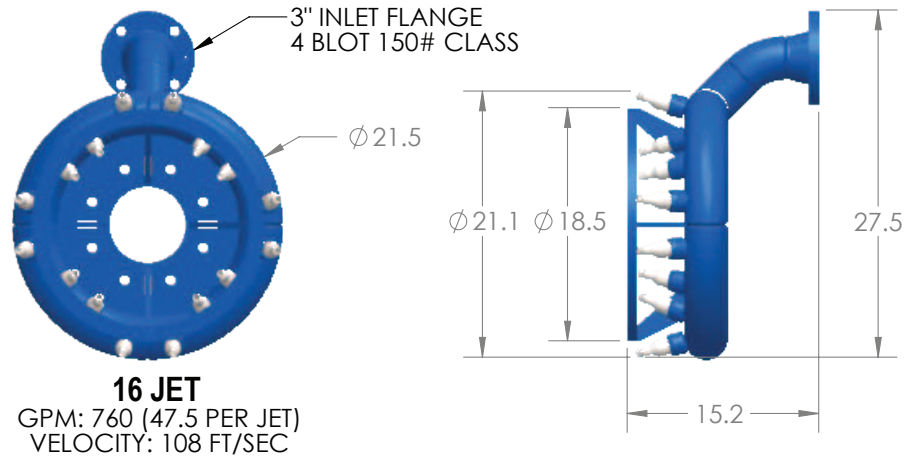
GENERAL SPECS

Production: 4000-7000 GPM or 500-600 cubic yards of material per hour		
Head with 700 Hp motor	Up to 200 feet	Up to 61 m
Overall Weight (without optional equipment)	9,500 lbs	4,310 kg
Overall Length	191 inches	4.85 m
Overall Height	60 inches	1.5 m
Overall Width with discharge pipe removed	58 inches	1.47 m
Overall Width with discharge pipe mounted (right side)	71 inches	1.80 m
Carrier Weight Range	30+ tons	27,215+ kg
Standard Jetting Ring Diameter	36 inches	0.91 m
Double seal with Sealed Barrier fluid tank (allow dry run)	3.5 inches	89 mm

We pump up to 70% solids, not water.

VISIT SITE NOW >>

JETTING RING HEAD SPEC SHEET



REPLACEMENT
JETTING NOZZLE

****GPM & VELOCITY CALCULATION BASED ON
4" CENTRIFUGAL WATER PUMP, 760 GPM WITH 81' HEAD**

SIZE	JETS	PART #
EXF4K	16	16025
EXF6K, EXF8K, EXF10K	28	12882

The information contained in this drawing is the sole property of Eddy Pump Corporation.
Any reproduction in part or as a whole without the written permission of Eddy Pump Corporation is prohibited.

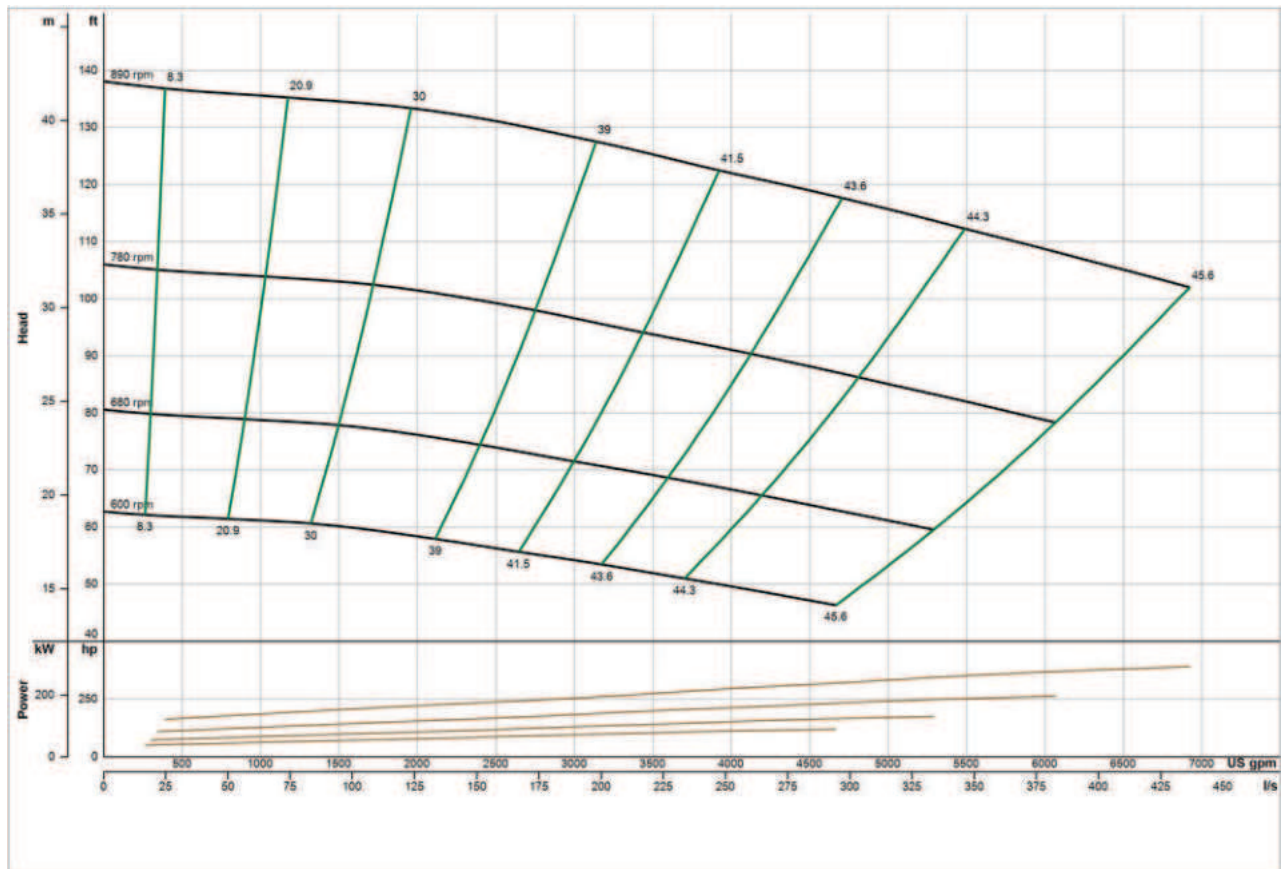
We pump up to 70% solids, not water.

VISIT SITE NOW »

PUMP CURVE

A pump curve is a graphical representation of a pumps ability to produce flow against a certain head. The science is matching a curve that is accurate for your project, leading to the proper pump selection and best efficiency. **EDDY Pumps** are primarily used for high solids, slurry, sludge, and dewatering.

EDDY Pump - Electric Cable Deployed Pump with Water Jetting Agitator 12-inches - Pump Curve



*General pump curve based on water with 900 RPM motor. Contact us with your specific material for a custom pump curve.

CONTACT US



(619) 258-7020



info@EddyPump.com